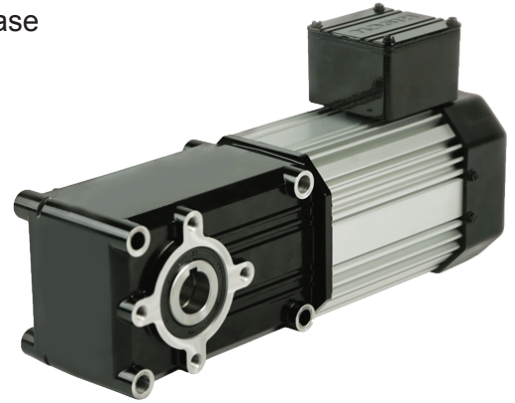


Maximum Efficiency Right-angle Gearmotors 730 230 V Three-Phase Inverter Duty (3-stage)

The heavy duty PowerSTAR® 730 Series 230V 3-stage three phase right-angle inverter duty gearmotor offers up to 1730 in-lbs of torque running continuously for reliable and energy efficient operation.



730 Series 3PH 230V Inverter Duty 80:1 to 240:1 -TEFC*

Part Number	Speed (RPM)			Rated Torque (in-lbs)			Input HP	Gear Ratio	OHL (lbs)	Rated Current (Amps)		
	6Hz	60Hz	90Hz	6Hz	60Hz	90Hz				6Hz	60Hz	90Hz
027-730G0080	2.1	21	31	766	766	511	1/3	80	820	1.75	1.70	1.4
027-730G0100	1.7	17	25	725	725	483	1/4	100	910	1.6	1.55	1.3
027-730G0120	1.4	14	21	871	871	581	1/4	120	965	1.6	1.55	1.3
027-730G0150	1.1	11	17	1090	1090	727	1/4	150	1010	1.6	1.55	1.3
027-730G0180	0.9	9.3	14	1310	1310	873	1/4	180	1050	1.6	1.55	1.3
027-730G0240	0.7	7.0	10	1730	1730	1153	1/4	240	1120	1.6	1.55	1.3

See accessories on page 17

